

Welcome

Precautions

! You must not eat, drink (not even water), chew gum, smoke or brush your teeth during the 30 minutes before taking the sample.

It is not necessary to keep the sample refrigerated; the preservative solution in the tube allows optimal preservation at room temperature (15-30 °C/59-86 °F) for 12 months after sample collection.

Do not swallow. If the solution comes into contact with eyes or skin, rinse with plenty of water. Keep away from children.

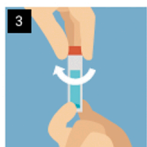
Instructions



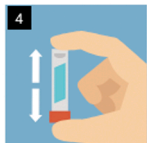
1 Spit into the funnel until the amount of saliva (excluding bubbles) reaches 2 ml.



2 Hold the tube upright and close the cap to allow the preservative solution to pass into the tube and mix with your saliva. Unscrew the funnel.



3 Close the collection tube with the cap. Make sure it is hermetically sealed so that the sample does not suffer problems during transport.



4 Shake the tube up and down 5 times to mix the saliva and preservative solution. Discard the used funnel.



5 Store the tube containing your saliva sample in the clear plastic blister.



6 Insert the plastic blister inside the cardboard box and the cardboard box inside the bag. After registration we will provide you with the return label if it is not already attached to the bag.